

TAJ MAHAL

DESIGNED BY TOBY LISCHKO
FOR HOFFMAN CALIFORNIA FABRICS



FINISHED PROJECT 52" x 58"

PATTERN AVAILABLE AT HOFFMANFABRICS.COM

Taj Mahal Treasures
Hoffman Taj Mahal collection
Designed by Toby Lischko
on EQ6

Quilt size: 52" x 58"

Fabric Requirements:

Fat quarter of each of the following: **E664-21G, E664-26G, E664-34G, E664-184G, E664-213G, E667-26G, E667-47G, E667-21G, E667-34G, E667-184G, E663-21G, E663-47G, E663-184G, E663-26G, E663-34G, E665-21G, E665-26G, E665-34G, E665-47G, E665-184G, 1895 Seamist**

1/2 yard: **1895 Lilly** - Border #1

1 3/8 yard: **1895 New Grape** - Border #2 and binding

1 yard: **E666-34G** - Border #3

3 3/4 yards any of the **Taj Mahal** collection for backing

58" x 64" batting

PLEASE READ ALL INSTRUCTIONS BEFORE BEGINNING

- Some knowledge of working with diamonds is helpful for this pattern.
- An accurate 1/4" seam is essential to the piecing of this quilt. All seams are sewn with 1/4" seams.
- When cutting diamonds from fabrics E663, center diamond on motifs.
- When making templates, make a copy of the original, cut out the paper template and tape it to the template plastic, instead of tracing it, then cut out. It will create a more accurate template. Be sure to include the outside line when cutting, this is your thread's width.
- For accurate piecing, be sure to trim the corners of the diamonds when cutting. They will match perfectly when sewing together.
- When printing pattern, set page scaling to "none".

Cutting Instructions: (WOF = width of fabric)

E663-21G, E663-47G, E663-26G, E663-34G: With large diamond template, cut 3 from each fabric.

E664-21G, E664-26G, E664-34G, E664-184G, E664-213G, E665-26G, E665-47G, E665-21G, E665-34G, E665-184G, E663-184G: With large diamond template, cut 2 from each fabric.

1895 Seamist: With large diamond template, cut 5.

1895 Lilly: Cut (3) 1 3/8" strips. With the small diamond template, cut 58.

Cut (6) 1 1/4" x WOF for border #1.

1895 New Grape: Cut (16) 1 3/8" strips; sub-cut into (96) 1 3/8" x 6 11/16" (halfway between 5/8" and 3/4").

Cut (6) 1 1/2" x WOF for border #2.

Cut (6) 2" x WOF for binding.

E667-26G, E667-47G, E667-21G, E667-34G, # 667-184G: Cut (2) Template 1a from each.

E667-184G, E667-47G, E667-34G: Cut (2) with Template 1b from each.

E667-26G, E667-21G: Cut (2) each with template 1c. Cut one pair with fabric right side up and one pair with fabric wrong side up. This will create a left and right corner.

E666-34G: Cut (6) 4 1/2" x WOF for border #3.

QUILT CONSTRUCTION:

1. Keeping 2 - 1 3/8" x 6 11/16" sashing strips, wrong sides together, line up the small diamond template on each end and trim off opposite corners with the diamonds going in the same directions as in illustration.



This will create left and right sashing strips and will make piecing with the diamond cornerstones easier. Repeat with all 96 sashing strips.

2. Using the photo as a guide, arrange the large diamonds, setting triangles (1a and 1b), corner triangles (1c), sashing strips, and small diamonds, alternating fabrics. Sew in diagonal strips, sewing the left sashing strips to small diamonds and right sashing strips to large diamonds, setting triangles, and corners. Press to small and large diamonds. Match seams and sew rows together. Small diamonds will not be even with quilt edge. See illustration on the following page.

3. Trim off ends of small diamonds to be even with rest of the edges.

BORDERS

4. Sew the **(6) 1895 Lilly** 1 1/4" strips together with diagonal seams to create one long border strip. Trim to **(2) 45"** lengths for top and bottom and **(2) 51"** lengths for sides.

5. Sew the **(6) 1895 New Grape** 1 1/2" strips together with diagonal seams to create one long border strip. Trim to **(2) 47"** lengths and **(2) 53"** lengths.

6. Sew the **(6) E666-34G** 4 1/2" strips together with straight seams to create one long border strip. Trim to **(2) 54"** and **(2) 60"** lengths.

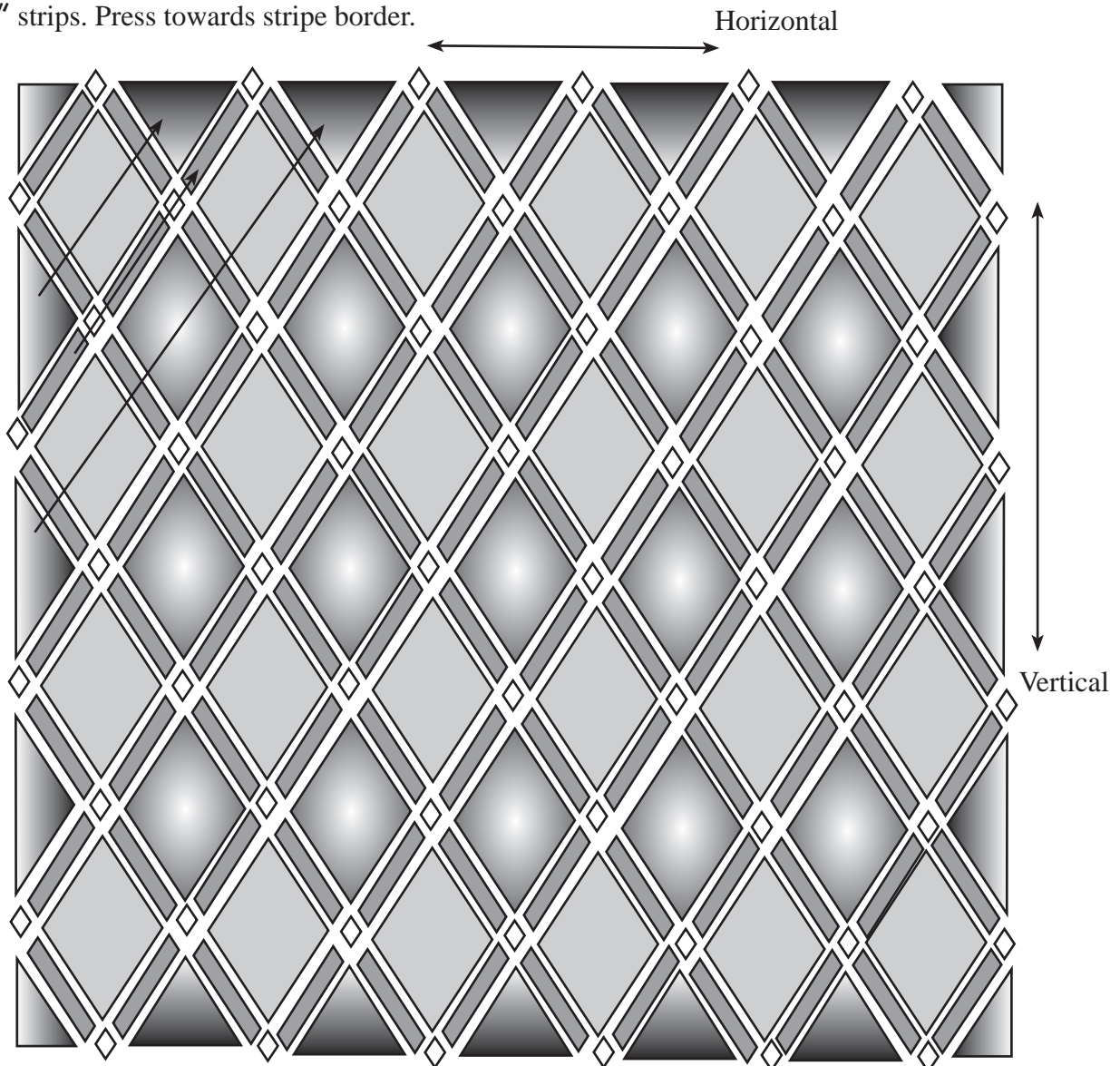
7. Matching centers, sew the 45", 47", and 54" strips together to create the top and bottom borders with **1895 New Grape** in the center.. Repeat with the 51", 53", and 60" strips. Press towards stripe border.

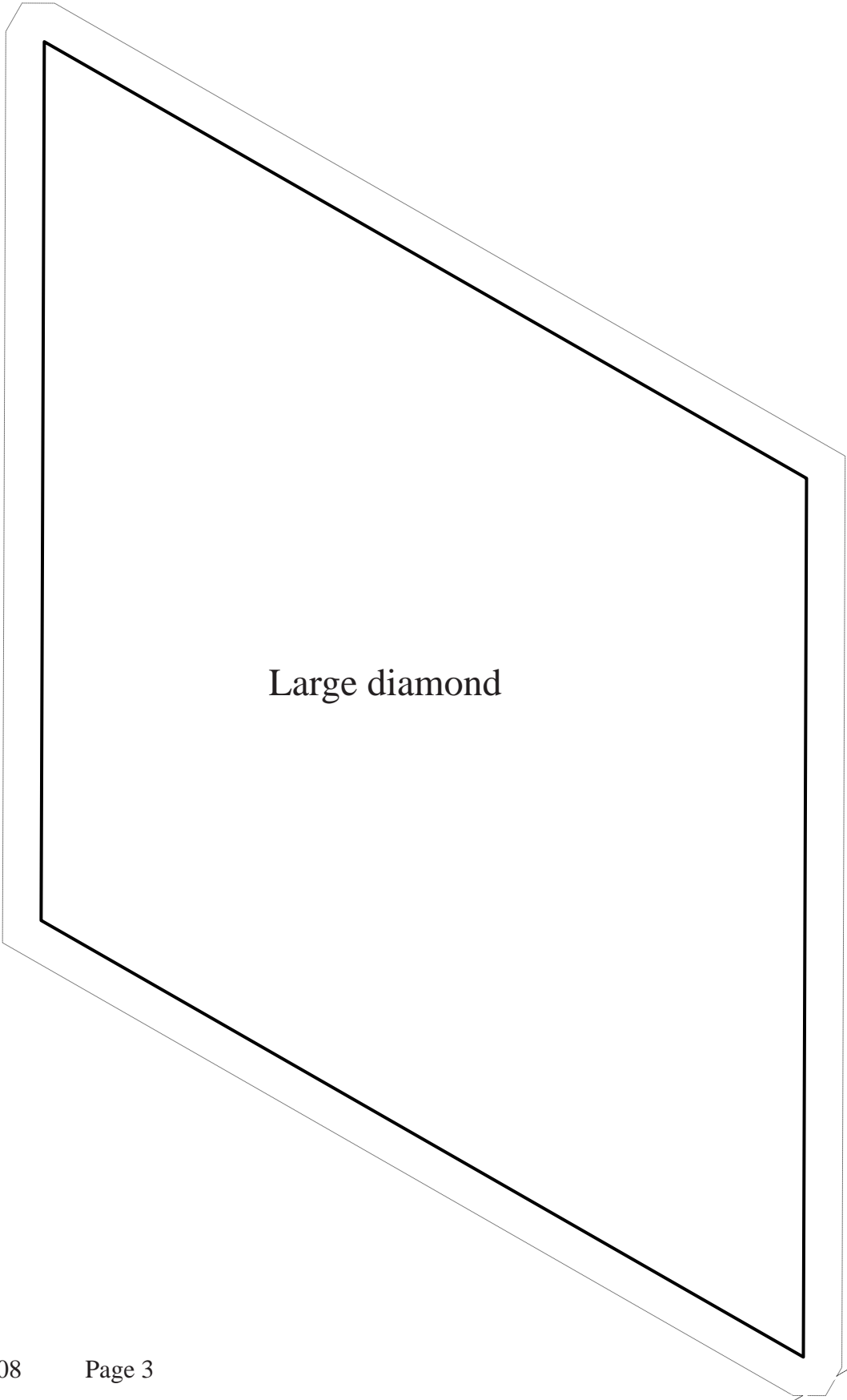
8. Measure quilt through horizontal and vertical centers. Divide this measurement in half and mark borders from center to this measurement on each side with a pin.

9. Matching centers and pin on border strips to center and ends of quilt, pin and sew to 1/4" (backstitch), from each end. Miter the 4 corners with your own miter technique. Trim miter seam to 1/4" and press seam open.

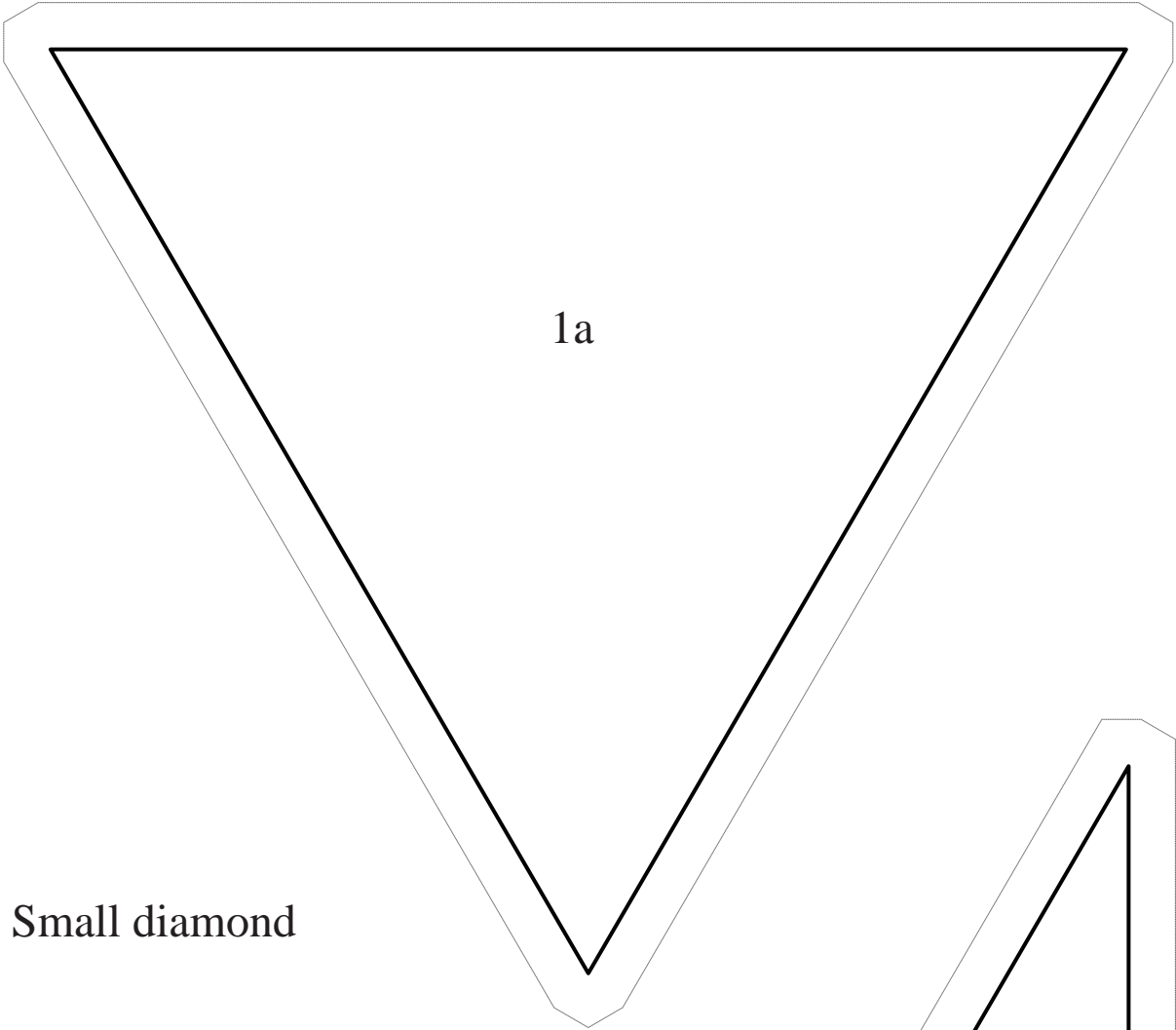
Piece backing, layer top, batting and backing and quilt as desired.

Sew the **(6) 1895 New Grape** 2" binding strips together with diagonal seams and sew to quilt, with 1/4" seam, using a double fold French binding technique.

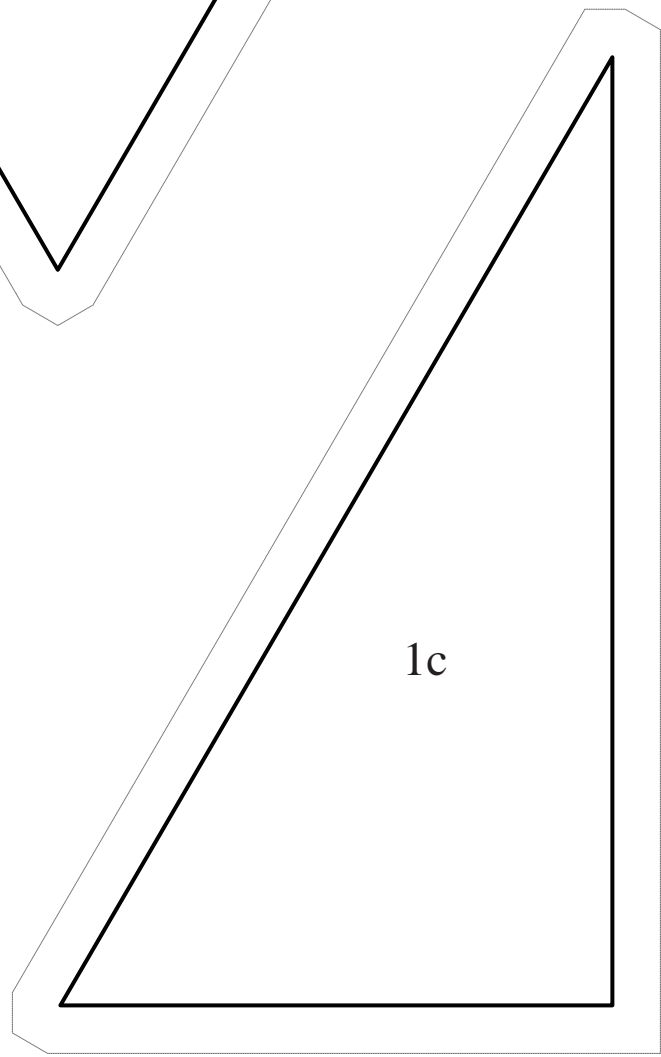
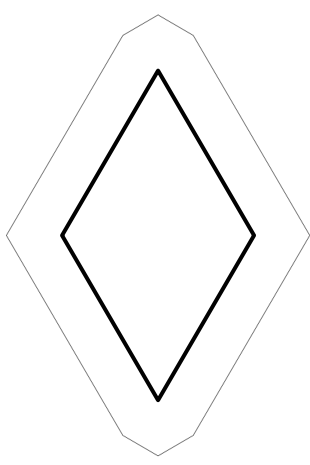


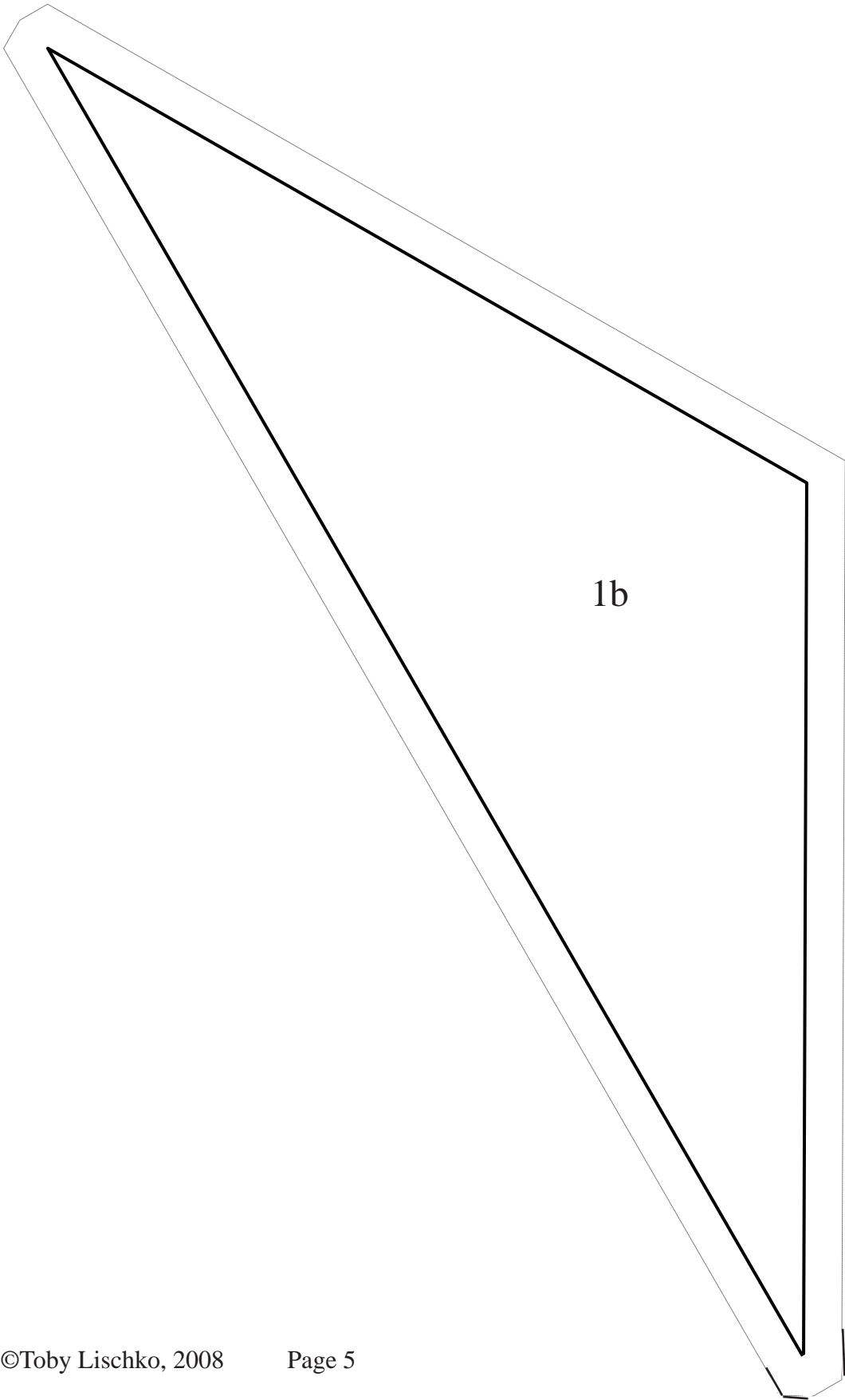


Large diamond



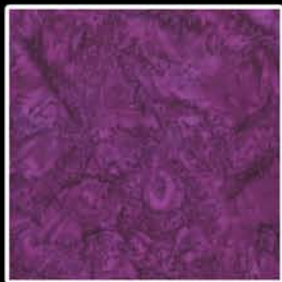
Small diamond







E666
34G-EGGPLANT GOLD



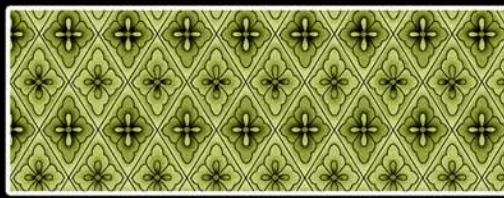
1895 N45-NEW GRAPE



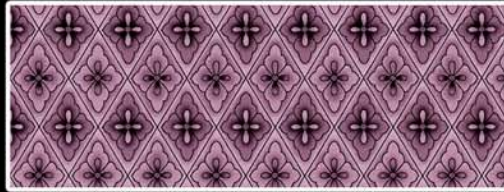
1895 352-LILLY



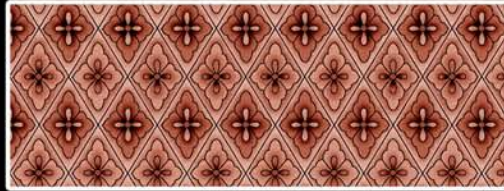
1895 174-SEAMIST



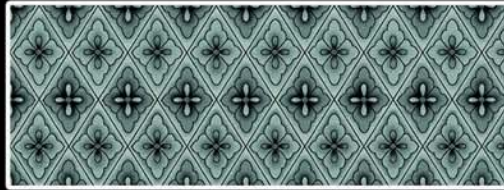
E667 184G-WILLOW GOLD



E667 34G-EGGPLANT GOLD



E667 26G-CURRY GOLD



E667 21G-TEAL GOLD



E667 47G-GOLD GOLD



E665 184G-WILLOW GOLD



E665 47G-GOLD GOLD



E665 34G-EGGPLANT GOLD



E665 26G-CURRY GOLD



E665 21G-TEAL GOLD



E663 21G-TEAL GOLD



E663 47G-GOLD GOLD



E663 184G-WILLOW GOLD



E663 34G-EGGPLANT GOLD



E663 26G-CURRY GOLD



E664 184G-WILLOW GOLD



E664 26G-CURRY GOLD



E664 21G-TEAL GOLD



E664 34G-EGGPLANT GOLD



E664 213G-ONYX GOLD