

VENETIAN HOLIDAY STAR

QUILT BY VICKI STRATTON
FEATURING VENETIAN HOLIDAY COLLECTION
BY HOFFMAN FABRICS



QUILT SIZE 52 1/4" SQUARE

FREE PATTERN AVAILABLE
AT WWW.HOFFMANFABRICS.COM

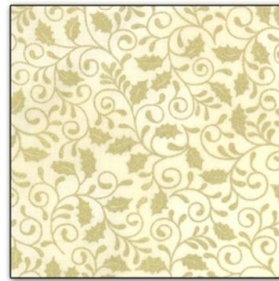
VENETIAN HOLIDAY STAR



½ yd F8088 36P-Amber Pearl



¾ yd F8084 33G-Cream Gold



½ yd F8089 33G-Cream Gold



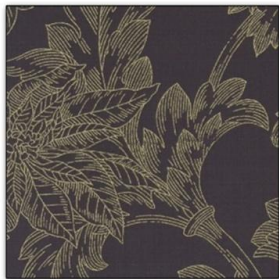
1 yd F8083 60G-Hunter Gold



1 yd F8086 47G-Gold Gold



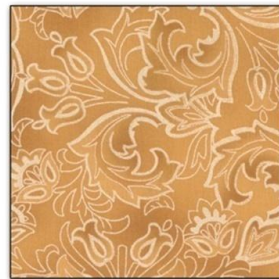
½ yd F8089 60G-Hunter Gold



½ yd F8084 4G-Black Gold



½ yd F8082 60G-Hunter Gold



½ yd F8082 36P-Amber Pearl



½ yd

F8081 33G-Cream Gold

www.HoffmanFabrics.com

F8088 Amber Pearl - ½ yard, F8084 Cream Gold – 3/8 yard, F8089 Cream gold – ½ yard

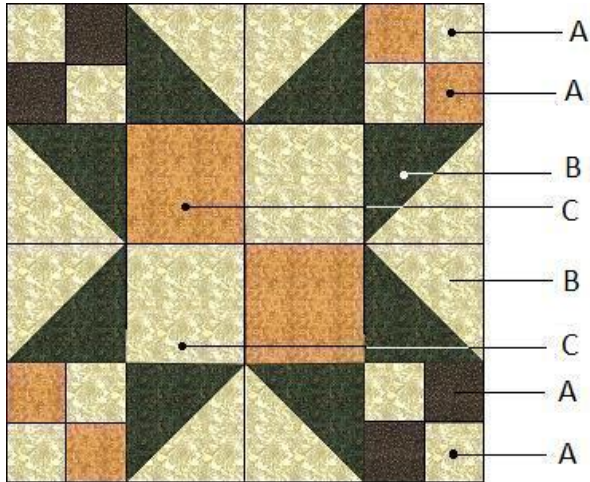
F8083 Hunter Gold – 1 yard, F8086 Gold Gold – 1 yard, F8089 Hunter Gold – 1/8 yard

F8084 Black Gold – ½ yard. F8082 Hunter Gold – 1/3 yard, F8082 Amber Pearl - ½ yard

F8081 Cream Gold ½ yard

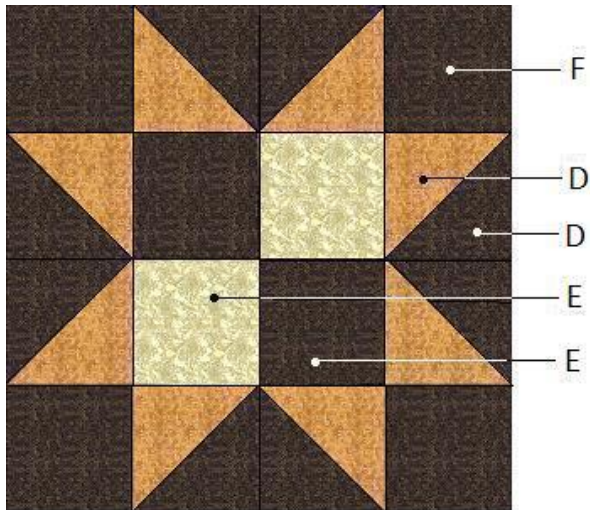
This quilt consists of 13- 8 ½” star blocks with two color variations, sashing, setting triangles and two borders. All seam allowances are to be an exact ¼”. Cuts are based on 44” wide fabric.

BLOCK A



- A - F8089 cream gold
- A - F8082 amber
- A - F8084 black gold
- B - F 8089 cream gold
- B - F8082 hunter gold
- C - F8084 cream gold
- C - F8082 amber

BLOCK B



- D - F8082 amber
- D - F8084 black gold
- E - F8089 hunter gold
- E - F8084 cream gold
- F - F8084 black gold

CUTTING for BLOCKS A & B – swatch chart shows fabric and style numbers. Refer to above style numbers and colors when cutting.

Cut 2 - 1 ½” strips EACH F8084 black and F8082 amber (A) and 3 - 1 ½” strips F8089 cream - BLOCK A – small four patches

Cut 3 - 3” strips EACH F8089 cream and F8082 hunter (B) - BLOCK A- cream & hunter half square triangles

Cut 2 - 2 ½” strips EACH F8084 cream and F8082 amber (C) - BLOCK A – large four patch in center

Cut 2 - 3” strips EACH F8082 amber and F8084 black (D) – BLOCK B – amber and black half square triangles

Cut 1 - 2 ½” strip F8089 hunter(E) – BLOCK B – four patches in center

Cut 1 – 2 ½” strip F8084 cream (E) – BLOCK B – four patches in center
 Cut 1 – 2 ½” strips F8084 black (F) – Block B corners

SEWING A BLOCKS

1. Sew two pairs of 1 ½” black and cream (A) strips right sides together on long edge. Press open. Cut 36 - 1½” units. Sew two units together, as shown at right, to make 18 black and cream four patches.
2. Repeat above process with 1 ½” amber and cream strips. Make 18 amber and cream four patches.
3. Using 2 ½” amber and cream (C) strips, repeat four patch process (step 1). Cut 18 – 2 ½” units. Sew units together to make 9 cream and amber four patches.
4. Pair 3” hunter and cream strips right sides together. Cut into 36 – 3” squares. Draw diagonal line corner to corner on back of fabric. Sew ¼” away from both sides of line. Cut apart on lines. Open, press and trim to exact 2 ½”. Make 72 hunter and cream half square triangles.
5. Lay out block as shown in BLOCK A diagram. Sew together 9 A blocks. Press.



SEWING B BLOCKS

1. Pair 3” black and amber strips (D) right sides together. Cut 16 – 3” squares. Repeat half square triangle process (step 4 above) to make 32 half square triangles.
2. With 2 ½” cream and black strips (E), repeat four patch process (step 3 above). Make 4 black and cream (E) four patches.
3. Cut 16 – 2 ½” squares for corners.
4. Lay out sewn squares as shown in BLOCK B diagram above. sew 4 B blocks. Press.



CUTTING SASHING, SETTING TRIANGLES AND BORDERS

Cut 9 – 2” strips F8083 hunter sashing strips. Cut into 36 – 2” x 8 1/2” sashing strips.

Cut 1 – 2” strip F8089 cream, from this strip cut 6 – 2” squares cream.

Cut 1 – 14” F8088 strip amber floral for setting triangles. Cut into 2 – 14” squares. Cut squares diagonally corner to corner in BOTH directions to yield 8 large setting triangles. From remainder of strip, cut 2 – 7” squares. Cut squares in half in ONE direction to yield 4 small triangles for corners. From remainder of strip, cut 4 – 3 ¾” amber floral squares. Cut diagonally in BOTH directions to yield 12 little sashing triangles.

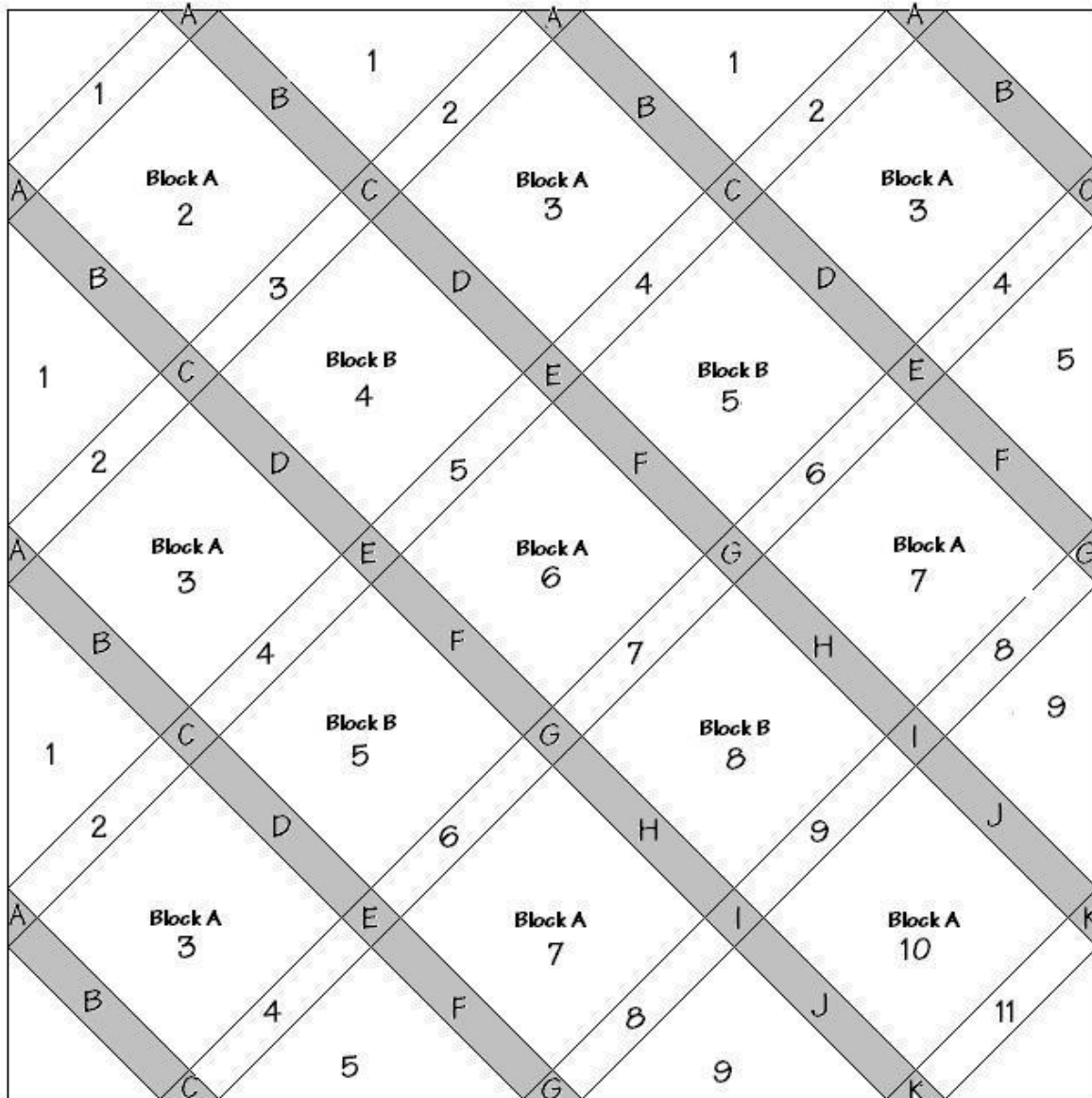
Cut 5 – 2” F8081 cream strips inner border

Cut 5 – 6” large F8086 amber floral strips for outside borders

QUILT ASSEMBLY

1. This quilt is assembled in diagonal rows. Lay out blocks and sashing as shown in diagram below.
2. The diagram shows the order in which the blocks will be sewn into diagonal rows. The block and sash rows are indicated with numbers. Sew those in numerical order. Press toward blocks.

3. The sashing strips are shaded and have letters in them. Sew those in alphabetical order. Press toward 2" squares.
4. Pin sashing strips to rows of blocks at seam lines. Sew and press.
5. Lastly, sew small triangles at corners. Trim straight and square.



SEWING BORDERS

1. Measure length of quilt. Cut and sew on inner side borders. Press. Measure quilt width. Cut and sew on top and bottom borders. Carefully press.
2. Repeat process with outer borders. Carefully press.
3. Cut 5 – 2 1/4" F8083 hunter strips for binding.
4. Layer top, batting, and backing. Quilt as desired. Trim straight and square.
5. Sew short ends of binding strips together. Press in half lengthwise.
6. Sew binding to top and turn to back. Blind stitch into place.