

# Mingei

by Nancy Rink



Quilt size 48" x 62"

featuring

Hoffman California Fabrics *Sumi-e* Collection

Free pattern available at [www.HoffmanFabrics.com](http://www.HoffmanFabrics.com)

# Mingei

Skill level: beginner  
Finished block size: 6" and 12"  
Finished quilt size: 48" X 62"

Designed by Nancy Rink of Nancy Rink Designs  
Featuring **Sumi-e** fabrics by Hoffman California Fabrics

## Fabric Requirements:

Fabrics indicated by \* are directional. Pay special attention to fabric orientation when cutting.  
FQ=Fat Quarter (18" x 20")

- |                          |    |                 |                          |          |                 |
|--------------------------|----|-----------------|--------------------------|----------|-----------------|
| <input type="checkbox"/> | FQ | F5013 #154 Teak | <input type="checkbox"/> | FQ       | F5013 #33 Cream |
| <input type="checkbox"/> | FQ | F5009 #154 Teak | <input type="checkbox"/> | ½ yd     | F5010 #21 Teal  |
| <input type="checkbox"/> | FQ | F5014 #154 Teak | <input type="checkbox"/> | ½ yd     | F5009 #29 Jade  |
| <input type="checkbox"/> | FQ | F5014 #Natural  | <input type="checkbox"/> | ½ yd     | F5010 #29 Jade  |
| <input type="checkbox"/> | FQ | F5012 #21 Teal  | <input type="checkbox"/> | 2/3 yd   | F5014 #21 Teal  |
| <input type="checkbox"/> | FQ | F5011 #21 Teal  | <input type="checkbox"/> | 1 2/3 yd | F5008 #21 Teal* |
- 3 yards of your favorite **Sumi-e** fabric for the backing
  - 58" x 72" batting

## Cutting:

Measurements include ¼" seam allowances. Border strips are exact length needed. You may want to make them longer to allow for piecing variations. It is always recommended that you measure your quilt to determine exact border measurements for your quilt.

\*fabric is directional. Pay special attention to fabric orientation when cutting

WOF= Width of Fabric

LOF= Length of Fabric (cut parallel to selvages)

### From F5013 #154 Teak

- 18 (6 ½" x 1 ½") rectangles
- 7 (1 ½" x 1 ½") squares

### From F5009 #154 Teak

- 18 (6 ½" x 1 ½") rectangles
- 7 (1 ½" x 1 ½") squares

### From F5014 #154 Teak

- 18 (6 ½" x 1 ½") rectangles
- 5 (1 ½" x 1 ½") squares

### From F5014 #Natural

- 17 (6 ½" x 1 ½") rectangles
- 4 (1 ½" x 1 ½") squares
- 3 (6 ½" x 6 ½") squares

### From F5012 #21 Teal

- 5 (6 ½" x 6 ½") squares

### From F5011 #21 Teal

- 4 (6 ½" x 6 ½") squares

### From F5013 #33 Cream

- 4 (6 ½" x 6 ½") squares

### From F5010 #21 Teal

- 2 (13 ½" x 13 ½") squares

### From F5009 #29 Jade

- 2 (13 ½" x 13 ½") squares

### From F5010 #29 Jade

- 1 (13 ½" x 13 ½") square
- 3 (6 ½" x 6 ½") squares

### From F5014 #21 Teal

- 2 (6 ½" x 6 ½") squares
- 20 (1 ½" x 1 ½") squares
- 6 (12 ¼" x WOF) strips, pieced together end-to-end for French Fold binding.

### From F5008 #21 Teal\*

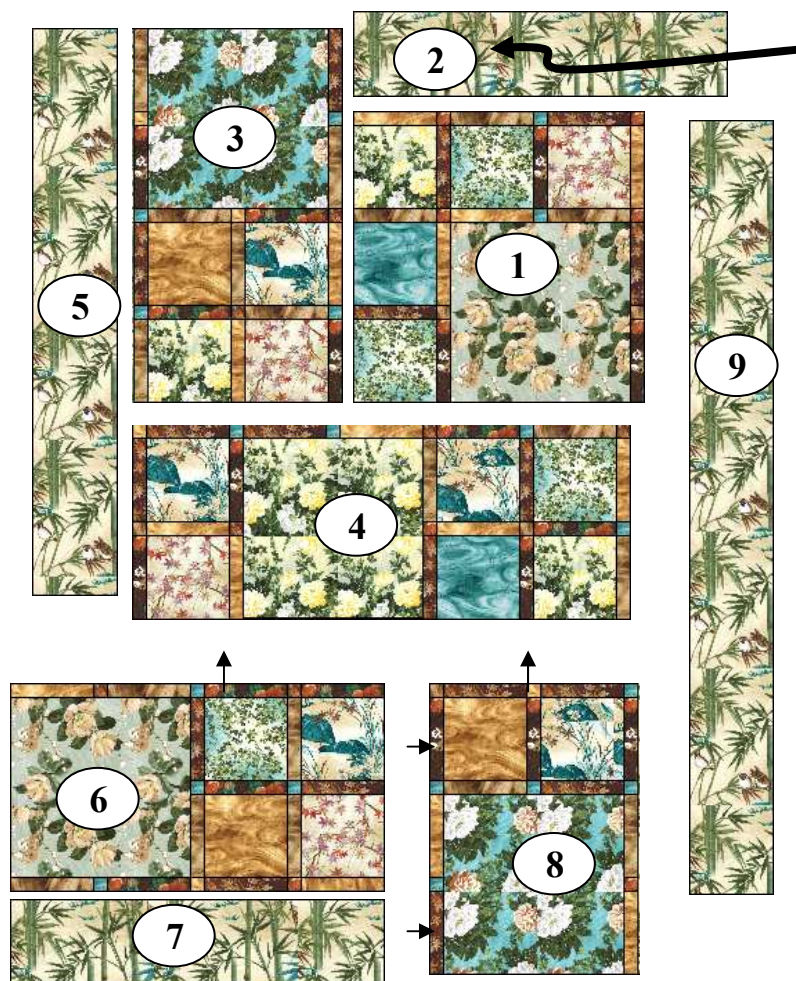
- 1 (6 ½" x 41 ½") LOF strip
- 1 (6 ½" x 56 ½") LOF strip
- 2 (6 ½" x 27 ½") WOF strips

## Quilt Assembly

1. Refer to the *Quilt Assembly Diagram* to lay out squares and rectangles.
2. Piece the elements together beginning with Section #1; attach it to Section #2 with a partial seam that extends to approximately 3" from the outer edge. Piece together Section #3 and attach it to Sections #1—2. Assemble Section #4; attach to the previously assembled sections. Add Section #5.
3. Piece together Sections #6, #7, and #8. Sew together according to *Quilt Assembly Diagram*. Attach to body of quilt.
4. Add Section #9. Finish sewing the partial seam from step two.

## Finishing

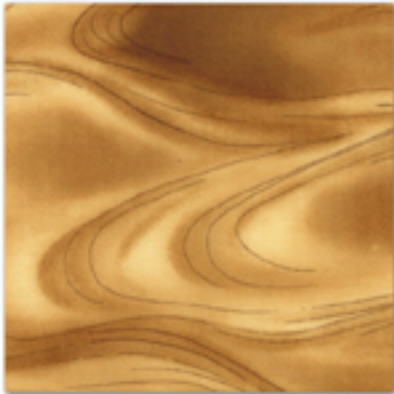
5. Stay stitch around the outside edge of the quilt to keep the seams from opening during the quilting process.
6. Cut backing into 1 (71") length and 1 (37") length. Cut the 37" length in half along the LOF; join together end to end to create a panel approximately 20" x 71". Join panels together; press seam allowances open.
7. Layer backing, batting, and quilt top. Baste. Quilt as desired.
8. Using the **F5014 #21 Teal** (2 1/2" wide) fabric strips, join together into one continuous piece for straight-grain French-fold binding. Add binding to quilt.



NANCY  
RINK  
D · E · S · I · G · N · S

nancyrinkdesigns.com  
661-205-2649  
©2008

# Sumi-e



F5014 20-Natural FQ



F5010 21-Teal 1/2 yd



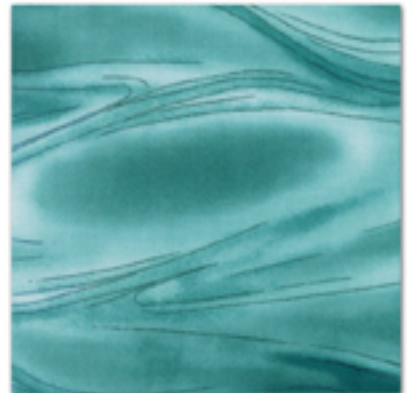
F5011 21-Teal FQ



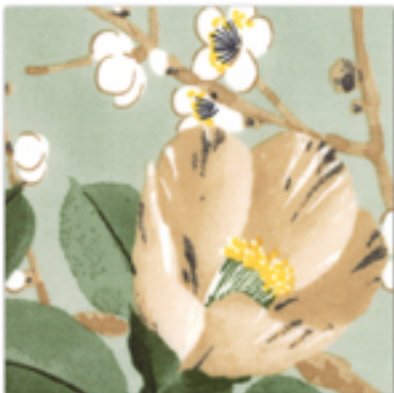
F5008 21-Teal 1 2/3 yd



F5010 29-Jade 1/2 yd



F5014 21-Teal 2/3 yd



F5009 29-Jade 1/2 yd



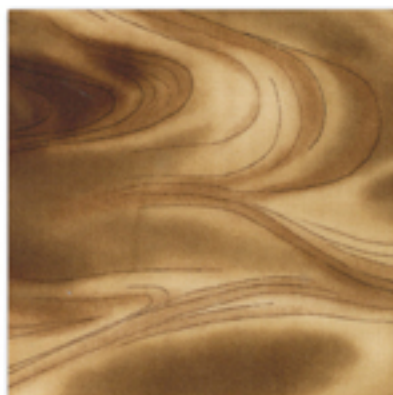
F5012 21-Teal FQ



F5013 33-Cream FQ



F5009 154-Teak FQ



F5014 154-Teak FQ



F5013 154-Teak FQ