

AUNTIES TWO PATTERNS

GIFT BAGS

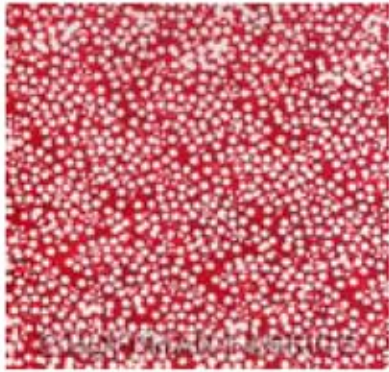
Finished Sizes

Small: 17" wide x 21" tall, Medium: 21" wide x 35" tall,
Large: 35" wide x 40" tall - this one will fit just about anything!!



Copyright 2011 Pattern Number AT109F A Free Pattern from Aunties Two
Aunties Two Patterns P.O. Box 4862 Portland, ME 04112
(207)831-7250 email: info@auntiestwo.com

GIFT BAGS
IN
HOFFMAN CALIFORNIA FABRICS
SEASONAL BATIKS



SEASONAL BATIKS E264-75- PEPPERMINT



SEASONAL BATIKS H2321-60-HUNTER



SEASONAL BATIKS H2323-75- PEPPERMINT

GIFT BAGS

*Wrap your presents quickly in these wonderful gift bags. Reuse them year after year!!
Lined bags make peeking almost impossible!!*

MATERIALS	Small	Medium	Large
	(4 Fat Quarters)	(2 yards)	(4 yards)
Bag Outside: 2 rectangles	18" x 22"	22" x 36"	36" x 42"
Bag Lining: 2 rectangles	18" x 22"	22" x 36"	36" x 42"
Ties:	4 strips 3½" x 21"	4 strips 3½" x 21"	4 strips 3½" x 42/44"
	<i>(note: for ties long enough to tie a large bow, use 4 strips 3½" x 42/44")</i>		
Binding: (Optional)	1 strip 2½" x 42/44"	1 strip 2½" x 42/44"	2 strips 2½" x 42/44"
	<i>(note: for large bag, sew 2 binding strips together across the short ends to create one long strip)</i>		

Other Tools: Matching thread, sewing machine, scissors (both large and small), pins, rotary mat and cutter, acrylic rulers, seam ripper, and measuring tape.

DIRECTIONS

Instructions given for Small Bag. Changes for Medium and Large in ()

SEWING INSTRUCTIONS:

STEP 1: Sew Bag Body

With right sides together and matching raw edges, lay one outside rectangle on top of one lining rectangle. Sew all the way around with a ¼" seam, leaving a 3" opening on the 22" (36", 45") side to turn. Do the same with the second set of outside and lining rectangles.

Clip corners and turn both right sides out through the opening. Poke the fabric out in each corner as much as possible. Fold raw edges of fabric in at the openings. Iron. Do not stitch opening closed.

STEP 2: Sew Ties

Select 2 tie strips. With right sides together, raw edges matching, start stitching at the middle of one long edge. Sew all the way around with a ¼" seam, leaving a 3" opening to turn. Clip corners, turn right side out. Poke fabric out at the corners. Fold raw edges of fabric in at the opening and iron. Topstitch all the way around ⅛" in from the edge.

STEP 3: Layer Bag Body and Ties

Layer one sewn Bag Body outside up with the 18" (22", 36") edge at the top. Place the ties on the 22" (36", 42") edges 2" (3", 4") from the top. One tie on the left and one on the right. Layer the second sewn Bag Body, outside down. Match all edges and corners. With a ¼" seam, sew down the right side of the bag, across the bottom and up the left side of the bag. Back stitch over ties.

STEP 4: Bind the top (Optional - while the top edge is finished, a binding adds a bit more finish)

Fold binding strip in half lengthwise and iron. With a ¼" seam, sew to top of bag on the outside overlapping ends as you would on a quilt. Flip to the inside and hand or machine stitch close to the fold. Wrap the ties around the back of the bag and then to the front. Tie a lovely bow. ENJOY THE HOLIDAYS!!