

# ROYAL MENDHI

Fabric Collection by Hoffman California Fabrics



Quilt Design by  
Toby Lischko

Quilt Size  
63" x 73"



G9045 Earth/Gold #58G



G9047 Brown/Gold #6G



G9047 Paprika/Gold #389G



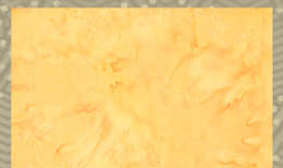
G9049 Natural/Gold #20G



G9049 Gold/Gold #47G



G9049 Red/Gold #5G



1895 Topaz #238

Free Quilt pattern from [www.HoffmanFabrics.com](http://www.HoffmanFabrics.com)

Style #	1 Kit	12 Kits
G9045 Earth/Gold #58G	¾ yd	9 yds
G9046 Earth/Gold #58G	2 ¼ yds	27 yds
G9047 Brown/Gold #6G	½ yd	6 yds
G9047 Paprika/Gold #389G	½ yd	6 yds
G9048 Spice/Gold #160G	½ yd	6 yds
G9049 Red/Gold #5G	¼ yd	3 yds
G9049 Natural/Gold #20G	⅝ yd	7 ½ yds
G9049 Gold/Gold #47G	¼ yd	3 yds
1895 Topaz #238	1 ¾ yds	21 yds



G9046 Earth/Gold #58G



G9048 Spice/Gold #160G

# Royal Mendhi Crystals

Neutral version  
Quilt size: 65" x 75"

Royal Mendhi collection  
Hoffman Fabrics  
Designed by Toby Lischko  
on EQ6

Block sizes: 4" x 18"  
4" x 7"  
4" x 4"

## *Fabric Requirements*

**1 3/4 yard 1895 Topaz**

**1/4 yard** of each of the following:

**G9049 Red Gold, G9049 Gold Gold**

**1/2 yard** of each of the following:

**G9047 Brown Gold, G9048 Spice Gold,  
G9047 Paprika Gold**

**5/8 yard G9049 Natural Gold**

**3/4 yard: G9045 Earth Gold**

**2 1/4 yards G9046 Earth Gold** for border and  
binding

**4 yards** any of the **Royal Mendhi** collection for  
backing

71" x 81" batting

## **PLEASE READ ALL INSTRUCTIONS BEFORE BEGINNING**

- An accurate 1/4" seam is essential to the piecing of this quilt. All seams are sewn with 1/4" seams.
- There are two options for putting the blocks together. Each starts with making squares out of the black fabric. You can use the included templates to trim the rectangles and squares and then sew together or you can draw a line on the backs of all of the black squares and sew along the line.
- The graduated fabric (**G9045 Earth Gold**) is cut the "length" of the fabric (along the sel-vage edge) to get all of the gradations in the block. Trim the strips at different places to be able to see more of the fabric changes.

*Cutting* (WOF = width of fabric, unless specified)

### **G9049 Red Gold**

Cut **two** 4 1/2" strip WOF; sub-cut into **sixteen** 4 1/2" squares.

### **G9049 Gold Gold**

Cut **two** 4 1/2" strip WOF; sub-cut into **seventeen** 4 1/2" squares.

### **G9045 Earth Gold**

Cut **six** 4 1/2" strips **lengthwise**; sub-cut into **six** 4 1/2" x 18 1/2" and **three** 4 1/2" x 7 1/2".

### **G9047 Paprika Gold**

Cut **three** 4 1/2" strips WOF; sub-cut into **five** 4 1/2" x 18 1/2" and **three** 4 1/2" x 7 1/2".

### **G9048 Spice Gold**

Cut **three** 4 1/2" strips WOF; sub-cut into **five** 4 1/2" x 18 1/2" and **two** 4 1/2" x 7 1/2".

### **G9049 Natural Gold**

Cut **four** 4 1/2" strips WOF; sub-cut into **six** 4 1/2" x 18 1/2" and **two** 4 1/2" x 7 1/2".

### **G9047 Brown Gold**

Cut **three** 4 1/2" strips WOF; sub-cut into **five** 4 1/2" x 18 1/2" and **two** 4 1/2" x 7 1/2".

### **G9046 Paprika Gold**

Cut **three** 4 1/2" strips WOF; sub-cut into **five** 4 1/2" x 18 1/2" and **two** 4 1/2" x 7 1/2".

Cut **four** 5" x 67" lengths on same stripe.

Cut enough 2 1/4" strips along the other stripe for binding to equal 290".

### **1895 Topaz**

Cut **twenty** 2 1/2" strips WOF; Sub-cut into **(316)** 2 1/2" squares.

Cut **seven** 1 1/2" strips WOF for border 1.

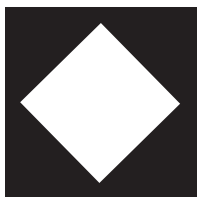
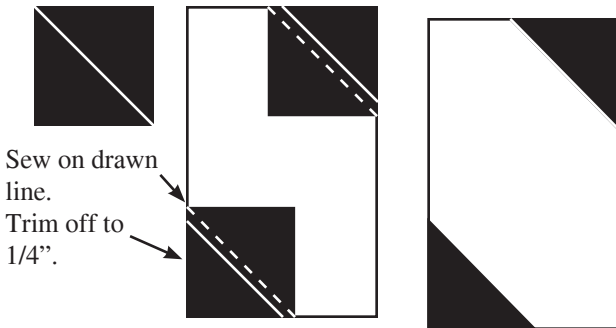
*Block construction:*

**Crystals and square-in-a-square** (general piecing for all sizes)

There are two size crystals: 4" x 18" and 4" x 7" and one square-in-a-square 4" x 4" (finished sizes).

There are two methods of constructing the block.

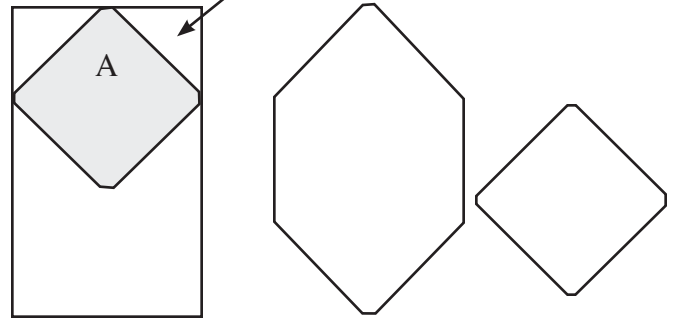
**OPTION 1.** Mark the backs of all of the 4 1/2" **1895 Topaz** squares diagonally with a light marking pencil. Sew along the diagonal line and trim seam to 1/4" on all of the rectangles and squares.



Press two corners to the triangles and two corners in (opposite sides pointing in or out). Be consistent with all crystals and square-in-a-square.

**OPTION 2.** Using templates on the last page, trim the corners of the rectangles and print squares with template A and trim the Topaz squares with template B. Sew together with 1/4" seam.

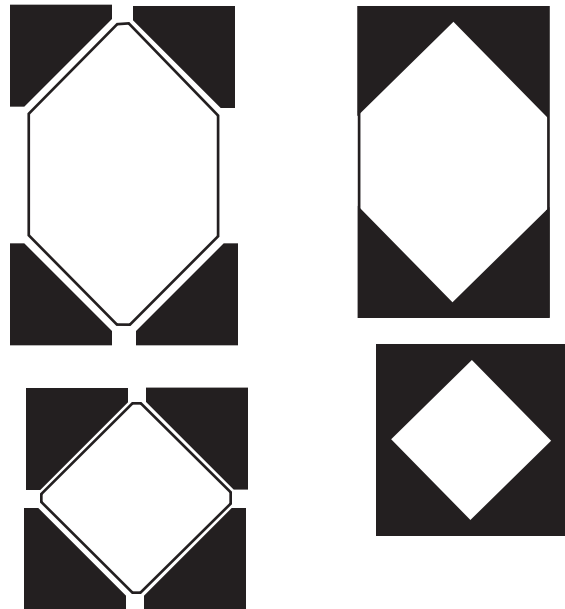
Using template A trim off all of the corners of the rectangles and print squares with a rotary cutter.



Using template B trim all of the topaz squares into triangles with a rotary cutter.

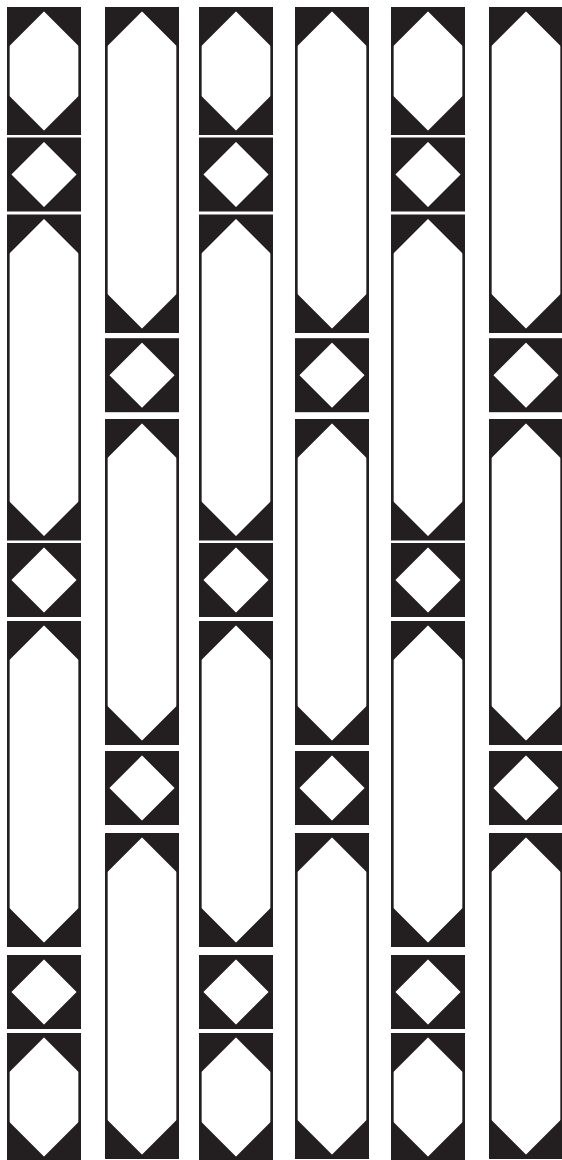


Sew all topaz triangles to each corner of all of the print rectangles and squares.



## Quilt construction

Following cover photo, alternating long crystals, short crystals, and square-in-a-square blocks, arrange according to fabrics or make up your own design.



Continue in this manner for a total 13 rows across. Sew blocks down and press seams between blocks open. Sew columns together and press seams either open or all in one direction.

## Border construction

Sew the **seven** 1 1/2" **1895 Topaz** strips, short ends together, with diagonal seams. Measure through the vertical center and trim **two** to this measurement. Sew to sides. Press to border.

Measure through the horizontal center and trim remaining 1 1/2" Topaz strip to **two** border widths and sew to top and bottom.

Measure through the vertical center and trim **two** 5" **G9046 Earth Gold** border fabrics to the vertical length of the quilt and sew on to sides. Press to stripe border.

Measure through the horizontal center and trim remaining **two** border stripes to vertical width and sew to top and bottom. Press to stripe border.

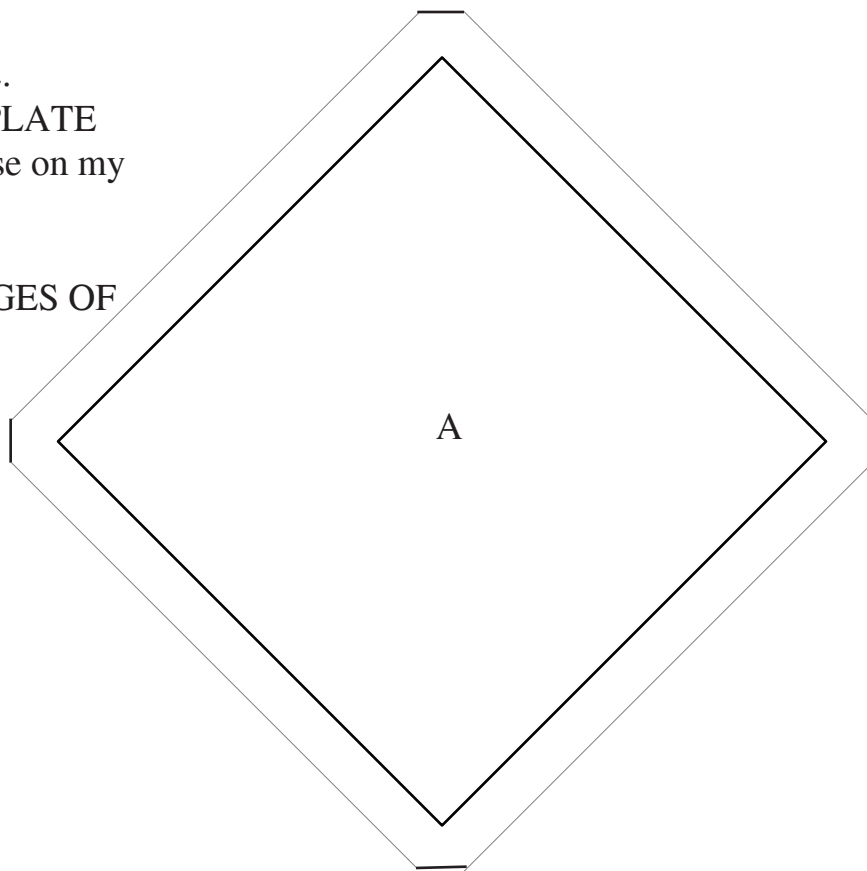
Layer, quilt, and bind with the 2 1/4" **G9046 Earth Gold** binding strips, sewn short ends together, with diagonal seams, using a French binding technique.

Remember to put a label on the back and ENJOY!

If you can't find the fabric at your local quilt shop, you can find the kit and fabrics at my website: <http://www.gatewayquiltsnstuff.com>.

A multi-purpose template set, that was used in making this quilt, is also available on my website for trimming corners of snowball, square-in-a-square, and flying geese, for blocks from 3" to 8" finished sizes.

TEMPLATES FOR  
ROYAL MENDHI.  
USE FOR OPTION 2.  
MAKE WITH TEMPLATE  
PLASTIC (or purchase on my  
website).  
ALIGN EDGES OF  
TEMPLATE TO EDGES OF  
FABRIC.



Set printer setting  
scaling to “none” for  
full size templates.

