

ROYAL MENDHI

Fabric Collection by Hoffman California Fabrics



Quilt Design by
Toby Lischko

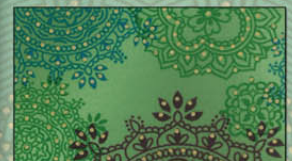
Quilt Size
63" x 73"



G9049 Turquoise/Gold #61G



G9049 Jade/Gold #29G



G9048 Jade/Gold #29G



G9045 Jewel/Gold #162G

Free Quilt pattern from
www.HoffmanFabrics.com

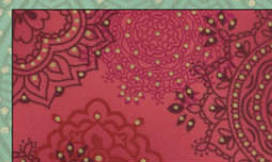
Style #	1 Kit	12 Kits
G9045 Paprika/Gold #389G	¾ yd	9 yds
G9045 Jewel/Gold #162G	¾ yd	9 yds
G9046 Paprika/Gold #389G	2 ¼ yds	27 yds
G9046 Twilight/Gold #582G	½ yd	6 yds
G9047 Sapphire/Gold #230G	½ yd	6 yds
G9048 Jade/Gold #29G	½ yd	6 yds
G9048 Magenta/Gold #72G	½ yd	6 yds
G9049 Jade/Gold #29G	¼ yd	3 yds
G9049 Turquoise/Gold #61G	¼ yd	3 yds
1895 Raven #494	1 ¾ yds	21 yds



G9045 Paprika/Gold #389G



G9047 Sapphire/Gold #230G



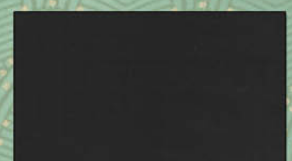
G9048 Magenta/Gold #72G



G9046 Twilight/Gold #582G



G9046 Paprika/Gold #389G



1895 Raven #494

Royal Mendhi Crystals

Multi-color version
Quilt size: 65" x 75"

Royal Mendhi collection
Hoffman Fabrics
Designed by Toby Lischko
on EQ6

Block sizes: 4" x 18"
4" x 7"
4" x 4"

Fabric Requirements

1 3/4 yard 1895 Raven

1/4 yard of each of the following:

G9049 Jade Gold, G9049 Sapphire Gold

1/2 yard of each of the following:

**G9048 Jade Gold, G9047 Sapphire Gold,
G9046 Twilight Gold, G9048 Magenta Gold**

3/4 yard of each of the following:

G9045 Paprika Gold, G9045 Twilight Gold

2 1/4 yards G9046 Paprika Gold for border and
binding

4 yards any of the **Royal Mendhi** collection for
backing

71" x 81" batting

PLEASE READ ALL INSTRUCTIONS BEFORE BEGINNING

- An accurate 1/4" seam is essential to the piecing of this quilt. All seams are sewn with 1/4" seams.
- There are two options for putting the blocks together. Each starts with making squares out of the black fabric. You can use the included templates to trim the rectangles and squares and then sew together or you can draw a line on the backs of all of the black squares and sew along the line.
- The graduated fabrics (**G9045 Twilight Gold** and **G9045 Paprika Gold**) are cut the "length" of the fabric (along the selvage edge) to get all of the gradations in the block. Trim the strips at different places to be able to see more of the fabric changes.

Cutting (WOF = width of fabric, unless specified)

G9049 Sapphire Gold

Cut **two** 4 1/2" strip WOF; sub-cut into **sixteen** 4 1/2" squares.

G9049 Jade Gold

Cut **two** 4 1/2" strip WOF; sub-cut into **seventeen** 4 1/2" squares.

G9045 Paprika Gold

Cut **five** 4 1/2" strips **lengthwise**; sub-cut into **five** 4 1/2" x 18 1/2" and **two** 4 1/2" x 7 1/2".

G9048 Jade Gold

Cut **four** 4 1/2" strips WOF; sub-cut into **five** 4 1/2" x 18 1/2" and **three** 4 1/2" x 7 1/2".

G9045 Twilight Gold

Cut **four** 4 1/2" strips **lengthwise**; sub-cut into **four** 4 1/2" x 18 1/2" and **two** 4 1/2" x 7 1/2".

G9047 Sapphire Gold

Cut **three** 4 1/2" strips WOF; sub-cut into **four** 4 1/2" x 18 1/2" and **three** 4 1/2" x 7 1/2".

G9049 Twilight Gold

Cut **three** 4 1/2" strips WOF; sub-cut into **five** 4 1/2" x 18 1/2" and **one** 4 1/2" x 7 1/2".

G9048 Magenta Gold

Cut **four** 4 1/2" strips WOF; sub-cut into **five** 4 1/2" x 18 1/2" and **two** 4 1/2" x 7 1/2".

G9046 Paprika Gold

Cut **two** 4 1/2" strips WOF; sub-cut into **three** 4 1/2" x 18 1/2" and **two** 4 1/2" x 7 1/2".

Cut **four** 5" x 67" lengths on same stripe.

Cut enough 2 1/4" strips along the other stripe for binding to equal 290".

1895 Raven

Cut **twenty** 2 1/2" strips WOF; Sub-cut into **(316)** 2 1/2" squares.

Cut **seven** 1 1/2" strips WOF for border 1.

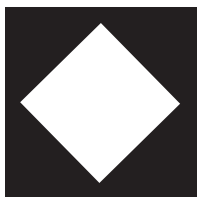
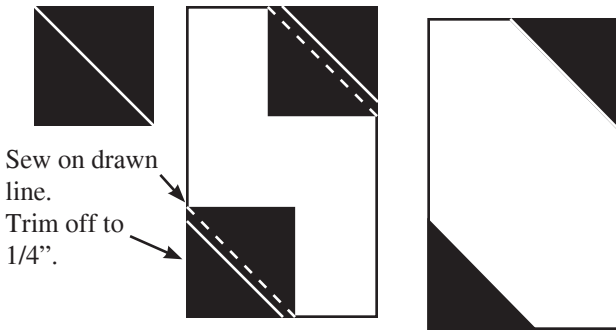
Block construction:

Crystals and square-in-a-square (general piecing for all sizes)

There are two size crystals: 4" x 12" and 4" x 7" and one square in a square 4" x 4" (finished sizes).

There are two methods of constructing the block.

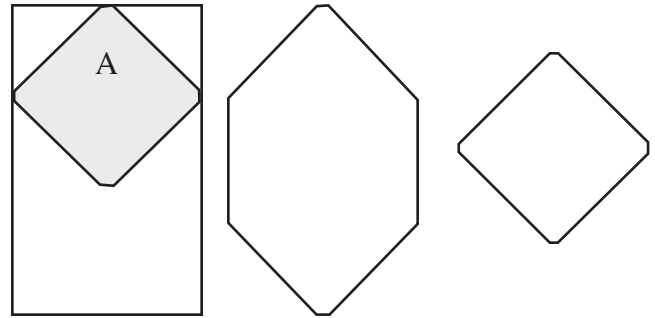
OPTION 1. Mark the backs of all of the 4 1/2" **1895 Raven** squares diagonally with a light colored marking pencil. Sew along the diagonal line and trim seam to 1/4" on all of the rectangles and squares.



Press two corners to the triangles and two corners in (opposite sides pointing in or out). Be consistent with all crystals and square-in-a-square.

OPTION 2. Using templates on the last page, trim the corners of the rectangles with template A and trim the black squares with template B and sew on with 1/4" seam.

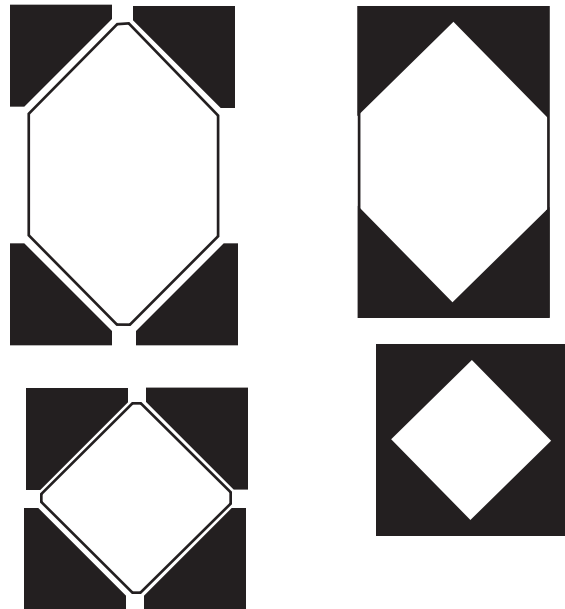
Using template A trim off all of the corners of the rectangles and print squares.



Using template B trim all of the black squares into triangles.

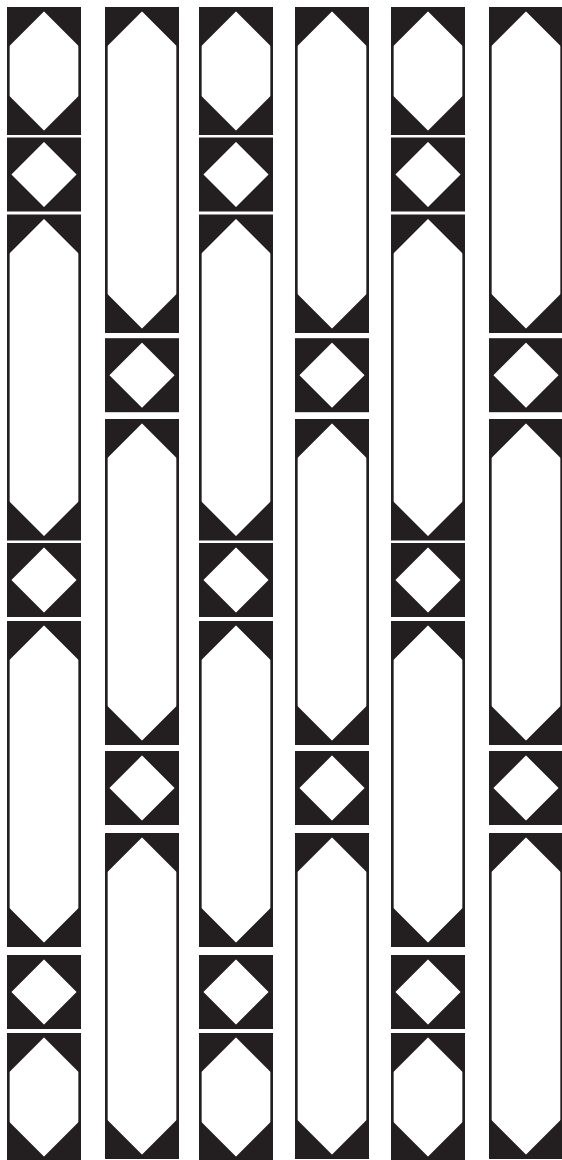


Sew all black triangles to each corner of all of the print rectangles and squares.



Quilt construction

Following cover photo, alternating long crystals, short crystals, and square-in-a-square blocks, arrange according to fabrics or make up your own design.



Continue in this manner for a total 13 rows across. Sew blocks down and press seams between blocks open. Sew columns together and press seams either open or all in one direction.

Border construction

Sew the **seven** 1 1/2" **1895 Raven** strips, short ends together, with diagonal seams. Measure through the vertical center and trim **two** to this measurement. Sew to sides. Press to border.

Measure through the horizontal center and trim remaining 1 1/2" strip to **two** border widths and sew to top and bottom.

Trim **two** 5" **G9046 Paprika Gold** border stripe fabrics to the vertical length of the quilt and sew on to sides. Press to border.

Trim remaining **two** border stripes to vertical width and sew to top and bottom.

Layer, quilt, and bind with the 2 1/4" **G9046 Paprika Gold** binding strips, sewn short ends together, with diagonal seams, using a French binding technique.

Remember to put a label on the back and ENJOY!

If you can't find the fabric at your local quilt shop, you can find the kit and fabrics at my website: <http://www.gatewayquiltsnstuff.com>.

A multi-purpose template set, that was used in making this quilt, is also available for trimming corners of snowball, square-in-a-square, and flying geese, for blocks from 3" to 8" finished sizes.

TEMPLATES FOR
ROYAL MENDHI.
USE FOR OPTION 2.
MAKE WITH TEMPLATE
PLASTIC.
ALIGN EDGES OF TEM-
PLATE TO EDGES OF
FABRIC.

